

Baikalox Regular



PRODUCT CODE

CR1

TYPICAL VALUES

BET Specific Surface Area (m ² /g)	3	
Crystal Structure	Alpha	
XRD Alpha crystallite size (nm)	55	
TEM Ultimate Particle Size (nm)	600	
Particle Size Distribution (µm)	d20	0.7
	d50	1.0
	d90	2.5
Bulk Density (g/cm ³)	0.60	
Tapped Density (g/cm ³)	0.95	

CHEMICAL ANALYSIS

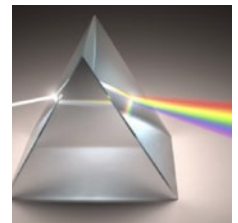
ICAP values (ppm)

Ca	2	Si	35	Na	14
Fe	5	K	23		

Main applications



Phosphor ceramics – LED



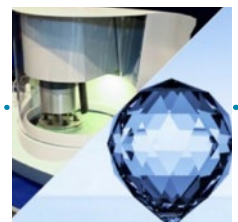
IOL, beam splitters
polishing



Ceramic ultra-filters



Ceramic coatings -
sensors



Metals & crystals
polishing

Typical values are given by Baikowski as an indication only. Such values are not contractual.

CONTACT NOW: sales@baikowski.com

BAIKOWSKI S.A.S.
1046 route de Chaumontet
BP 501 - 74330 POISY
FRANCE



Baikowski 
PSB INDUSTRIES

www.baikowski.com

BAIKOWSKI JAPAN CO, LTD JAPAN | CHIBA
BAIKOWSKI CHINA CHINA | SHANGHAI
BAIKOWSKI KOREA CO, LTD KOREA | SEOUL
BAIKOWSKI INTERNATIONAL CORP USA | CHARLOTTE (NC)
BAIKOWSKI MALAKOFF INC USA | MALAKOFF (TX)